

1KC 2021 – Briefing

You need is a digital pic of your bike in front of a landmark or sign from these places:

Mauriceville



Kopikopiko Rd & Tutaekara Rd



Rangiwahia Memorial

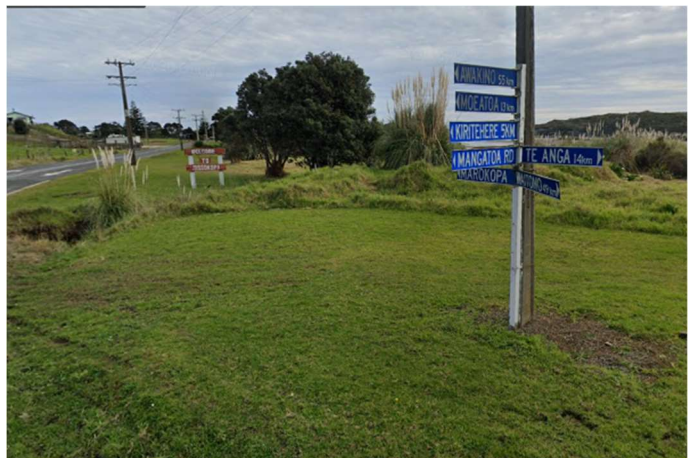


Waitomo Glowworm Centre



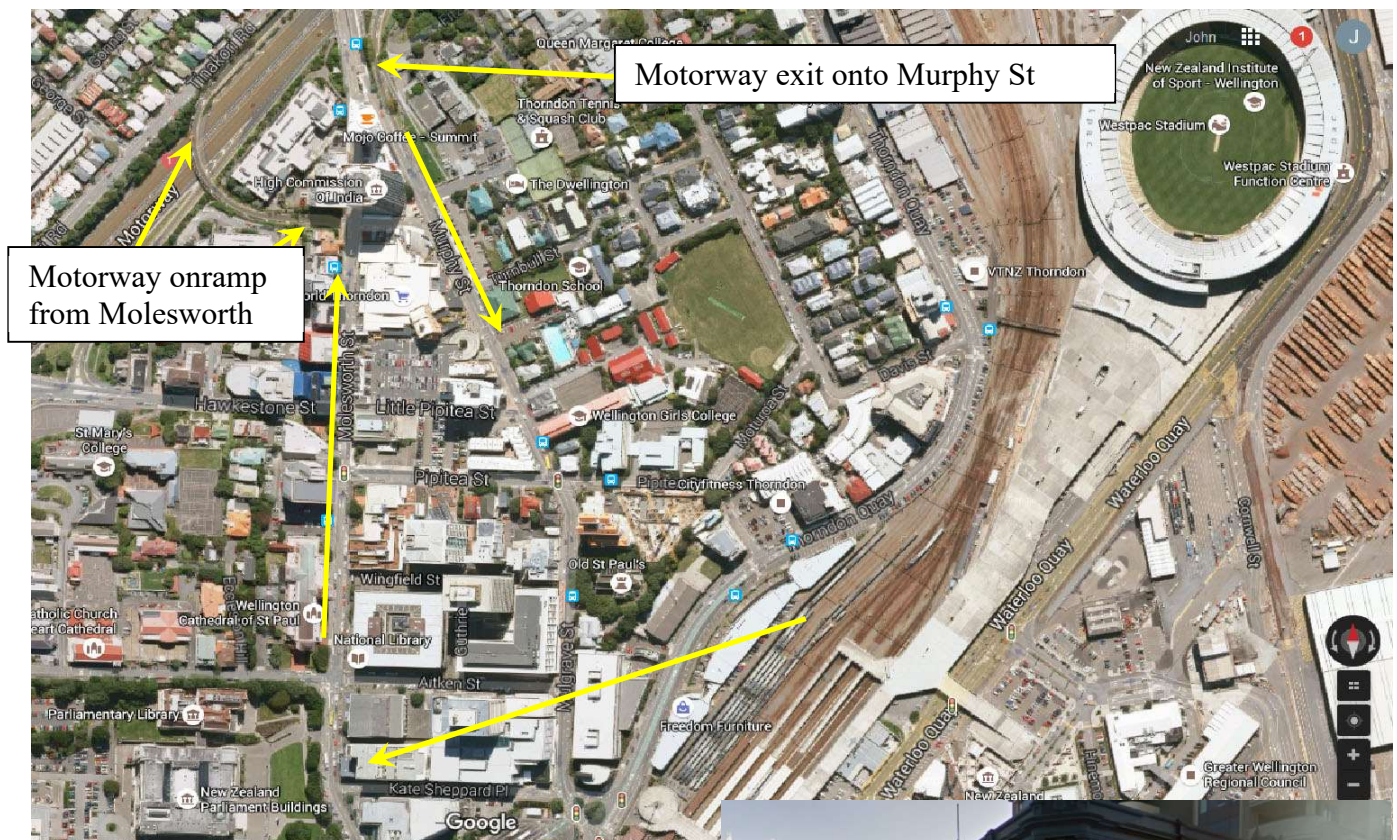
Marokopa & Mangatoa Rds

Sign



Patea – Aotea Canoe





Murphy St is one way coming down and Molesworth one way going back up. Aitken St is two way and Kate Sheppard Pl is one way from Molesworth to Murphy



The Final Destination – Backbencher, Molesworth St (Opposite Parliament) Coming from SH1 - Take the Murphy St Off Ramp, Turn right on Aitken St and park on the corner...or

Ride down to the train station and come back up Molesworth St to park right outside the door.

...or make up your own devious route.

Exiting after you just go back up Molesworth and keep in the left lane to get onto the Motorway, or the right lane to turn onto Tinakori St, which will get you to the Old Hutt Rd. Otherwise, along Kate Sheppard Pl will get you to Thorndon Quay and onto the Old Hutt Rd from there. Be careful though as you need to cross the three lanes on Murphy/Mulgrave St to get across to the slipway onto Thorndon Quay. There won't be much traffic on a Saturday though.

